

## FIBEX INSIDE SERIES



**@agostini**


**SERRAMENTI  
MADE IN  
ITALY  
DA OLTRE  
50  
ANNI**



# AGOSTINI GROUP, A LONG HISTORY IN THE INNOVATION OF ITALIAN DOORS, WINDOWS AND SHUTTERS.

Over fifty years of success, from the first PVC rolling shutters up to the innovative Fibex Inside systems in mixed aluminium and wood. Fifty years during which the Agostini Group has made its mark in the history of Italian window and door solutions.

The Group's longstanding track record keeps evolving, while constantly holding true to the culture of quality, innovation and professionalism matched with great customer service. The Agostini Group's philosophy is based on continuity between craft tradition and technological research, to continue offering windows that have become an icon of Italian-made excellence.

- 
- 1963 Luciano Agostini started his first company, which made PVC roller shutters - a real revolution compared to the wooden roller shutters on the market at that time.
- 1984 The know how accumulated in working with plastics brought the Agostini family to launch a line of PVC doors, windows and shutters with important European system experts that was among the first in Italy.
- 1999 Agostini's R&D developed Fibex, one of the first fiberglass composites to be used to produce shutters and blinds. This innovative system was created also thanks to the collaboration with North American companies, to cater to the growing demand for materials that give high thermal and mechanical performance.
- 2008 Agostini launched a new system that is the synthesis of the Group's research. It is a series of shutters and blinds in aluminium and aluminium-wood with insulating Fibex inserts: Fibex Inside, a new frontier in insulation that ensures incomparable thermal insulation.
- 2013 A variety of new products were launched, like the 500 H Series, with Total Glass and Total Color finish for PVC doors, windows and shutters, and the new lift-and-slide doors with the Fibex Inside technology, proving that the Agostini Group continues to conceive and make innovative solutions.
- 2017 The Agostini Action Air "air exchange" system was presented, which gives cleaner and healthier environments, without wasting energy.  
The design was concluded and construction works started and advanced, for the new headquarters that will host the new production plant and the Group's new management offices.

# Agostini, Fibex Inside window and door solutions.

Agostini proposes a wide range of Fibex Inside aluminium-wood and aluminium window and door solutions, which include both hinged and sliding windows, in different colours and finishes, all customizable with a wide choice of accessories - from handles and locks to motor-drives - to meet the market's needs and suit all homes.

Agostini's Fibex Inside windows use a Fibex insulating central body that ensures maximum thermal insulation and exceptional structural stability. The system achieves the highest levels of customization and design as it allows different finishing materials to be combined in the inside part.













# Agostini alu-wood, the warmth of the wood, the strength of the aluminium

## **Technology and innovation for unique windows**

Agostini alu-wood windows perfectly combine the natural and pleasant warmth that only wood can convey, with the strength and resistance of an aluminium window.

Their elegant and unique style and their lifetime quality and lack of maintenance make these windows furnishing items in their own right, and the ideal choice for all types of room.

Agostini alu-wood is more than just a window; it is a function furnishing element that perfectly blends in with new building techniques, with an eye for energy-saving and quality living.

The great care taken over the details and the elegance of these windows is an expression of Agostini's technology, making these furnishing items the ideal choice for also the most prestigious of premises.

The experts' know-how helps us create products at the top of the window sector, through ongoing innovation and excellence at every step - from design to the installed finished products.

The Agostini system was founded on research orientated to improving the functional performance and great looks. Through detailed studies of technology and materials, Agostini led the way in introducing the coupling of aluminium and wood and in patenting a system with such innovative features as "Fibex Inside".

Agostini systems have obtained all the leading Italian and European certifications, and its windows have passed the most stringent tests, obtaining the highest class in the technical tests for air-water-tightness and wind resistance.

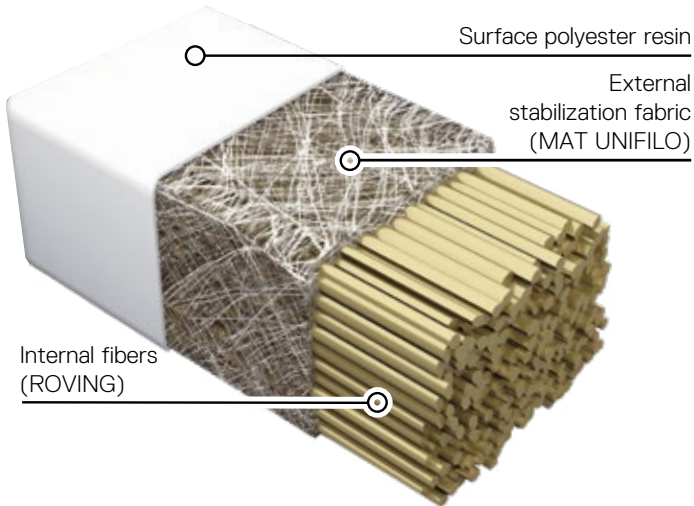
## Index

Fibex, the force of innovation	10
Technology of systems	12
Wood Design	14
Aluminium Design	18
Total Glass Design	22
Venice Collection	26
Configurations	30
Colour Range	32





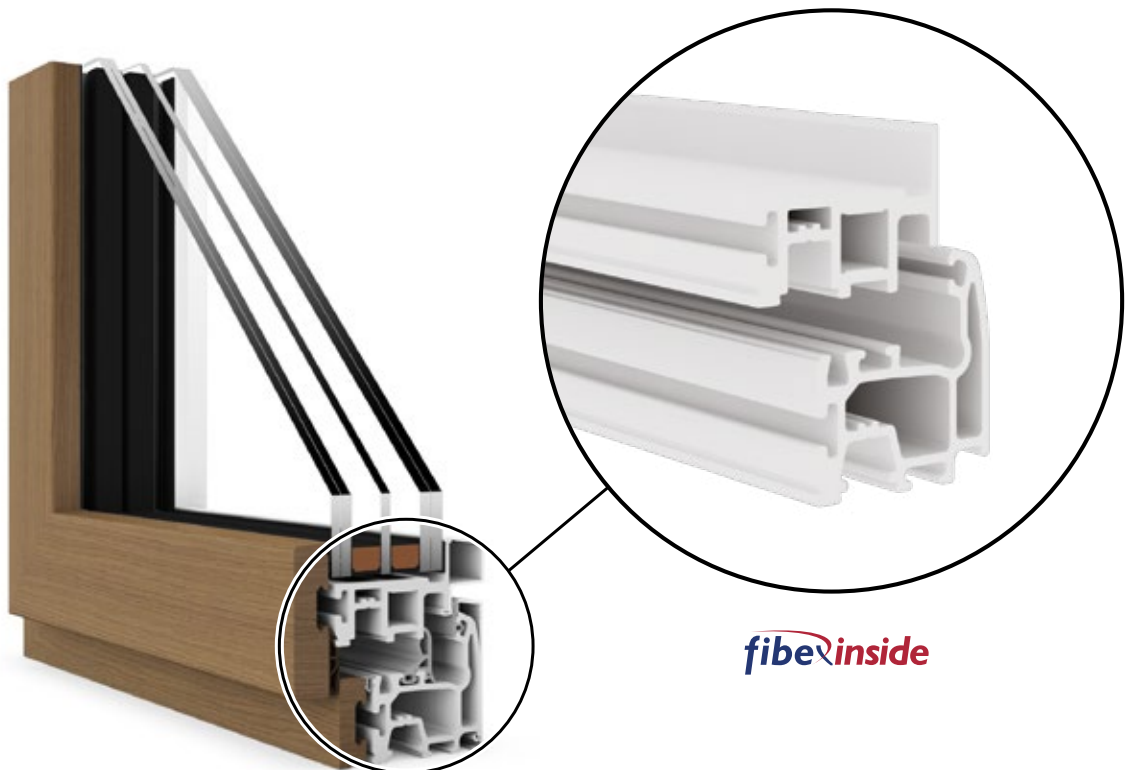
# Agostini and Fibex, strength in innovation.



FRP (Fiber Reinforced Polymer), often called "Composite Material", is usually made from a matrix and a fibre; not all fibres are the same and depending on requirements, other fibers like Kevlar, Carbon or Glass, are also used.

FIBEX is a composite material made with uni-directional fiberglass (roving), enveloped in a multidirectional fiber material (mat) that is soaked with polyester resin.

The manufacturing process of the Fibex profiles is called pultrusion (from the word "pull") which is an extrusion process carried out under tension. Compared to traditional materials, the favourable ratio between strength and weight of the composite is what drives its growing success and everincreasing applications due to its design flexibility.



**fibex**inside

# Fibex Inside, sometimes the essential is invisible.

Agostini uses the Fibex composite as an innovative isolating material in the Fibex Inside 500 Series. With its intrinsic characteristics, Fibex confers these windows outstanding functional advantages.

## **thermal insulation**

### **Excellent insulation**

The low thermal conductivity of Fibex means the Fibex Inside 500 series achieves unparalleled results in thermal insulation, raising the bar on its traditional level. This is our tangible answer for these times when attention of the design and regulation world is on high-performance solutions.

### **Maximum design flexibility**

The 500 project opens up a new era in window design. By maintaining a Fibex central insulation unit which guarantees resistance and insulation, the window can easily be customized not only internally with different sections and wooden and aluminium shapes, but also externally with different contours and materials depending on design requirements.

## **design flexibility**

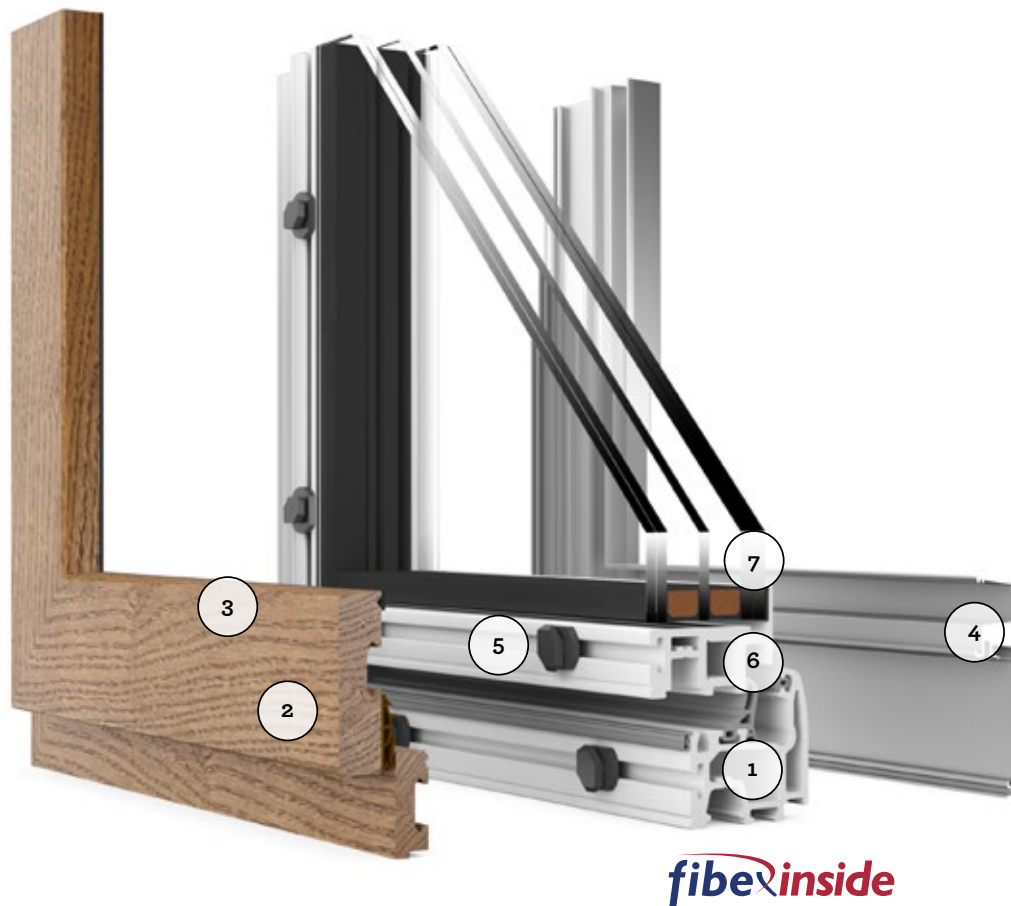
## **glass surface**

### **Minimal encumbrance**

The strength of the Fibex profiles allows us to achieve finished products with smaller sections, thereby increasing the glass surface of the window by 10%. The central section is also designed with minimum encumbrance while guaranteeing insulation and functional performance.



# AGOSTINI FIBEX INSIDE: systems technology.



## 1. ***fibexinside***

Composite central body ensures structural stability, excellent thermal insulation, maximum design flexibility and minimal dimensions.

## 2. **Internal finishing**

The interior finishing features of the Fibex Inside frame can be in wood, aluminium, and in glass in the exclusive Total Glass line; the prestigious Venice collection instead comes in an infinite combination of materials.

### 3. No glazing

The internal part of the window or door leaf also performs a glazing function while offering a simple, more elegant design. (Glazing used on the fixed parts).

### 4. External finishing

The external finishing can be made of aluminium or architectural bronze. The aluminium ranges have a minimal leaf, which is mounted flush to the frame (series P “Plane”) or concealed from outside view (H “Hide” series).

### 5. Laminated materials technology

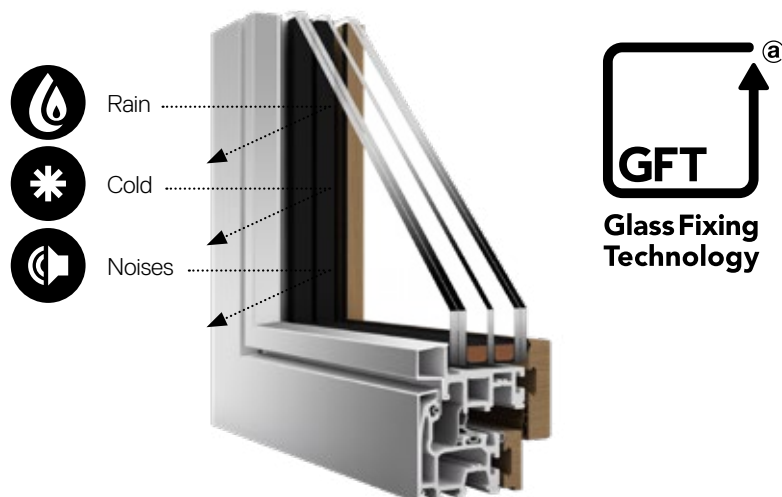
The Fibex Inside window frame is made by laminating the central part in Fibex with the interior finishing element using a single element in nylon without interposed screws, thus ensuring insulation and independence of the two different materials (system not adopted in the Total Glass lines, where the glass is fixed with GFT system also for the interior part).

### 6. Sealing system

The Fibex window frame always includes 3 seals to enhance thermal and acoustic insulation performance. The internal rebate gasket is in acoustic tri-extruded TPE, available in white, brown and black.

### 7. GFT - Glass Fixing Technology

The glass is secured to the frame with a special perimeter structural seal. The exclusive GFT system makes the glass ‘all as one’ with the window frame, ensuring absolute waterproofing, excellent thermal insulation, and structural stability over time.



## — FIBEX INSIDE SERIES WOOD DESIGN

In the **Wood** Design range, the Agostini frame looks like a real wooden frame, with Fibex Inside technology. The natural and pleasant warm feeling that only wood can imbue in our homes combines with the stability and insulation of Fibex, a special fibreglass composite while the exterior aluminium finish contributes to the design and colour flexibility. The elegant and distinctive style make these frames design items in their own right, superb in all contexts visually - and, of no lesser importance, for their durability and maintenance-free qualities.







# Aluminium-wood casement windows.



## Style and innovative design

- Inner leaf lining in modern, squared wood and reduced height (55 mm).
- Internal-side leaf available surmounting the frame (one level) or flush to the frame (zero level).
- External-side leaf slides into frame (H) or is flush with frame (P).
- Optional concealed hinges, mandatory with zero-level configuration.



## Guarantee of living comfort

- The leak-proofing system has 3 seals, with internal soundproofing stop-seal.
- Resistance classes<sup>1</sup>:
  - Air permeability: Class 4
  - Wind load resistance: Class B5
  - Driving-rain tightness: Class E 750
- Acoustic insulation 35 dB as standard<sup>2</sup>, extendable up to 45 dB with dedicated windows.



## Safe choice

- All locking points with self-adjusting mushroom pawls on burglar-resistant steel hardware, resistance class RC1<sup>3</sup>.



## Intelligent choice for energy savings

- Broad glass-housing space, up to 51 mm.
- Heat transmission: **Uf up to 0.98 W/m²k - Uw up to 0.72 W/m²k.**
- “Casa Clima” certification in Gold category.



AGOSTINI GROUP srl  
modello: 502P



codice: 01.0 0077

<sup>1</sup> Tests carried out on two-leaf window, one of which can be folded, 1,700 x 1,800 mm.

<sup>2</sup> Tests performed on a two-leaf window, one of which can be folded, 1,294 x 1,494 mm.

<sup>3</sup> TFor RC1- or RC2-Certified windows and doors, additional technical specifications are required.

# Inner Configurations



ONE LEVEL

Frame: 68 mm x 59/82 mm



ZERO LEVEL

Frame: 88 mm x 59/82 mm

# External Configurations



HIDE (H)

Concealed Fibex leaf in frame  
Frame: 68/88 mm x 82 mm



PLANE (P)

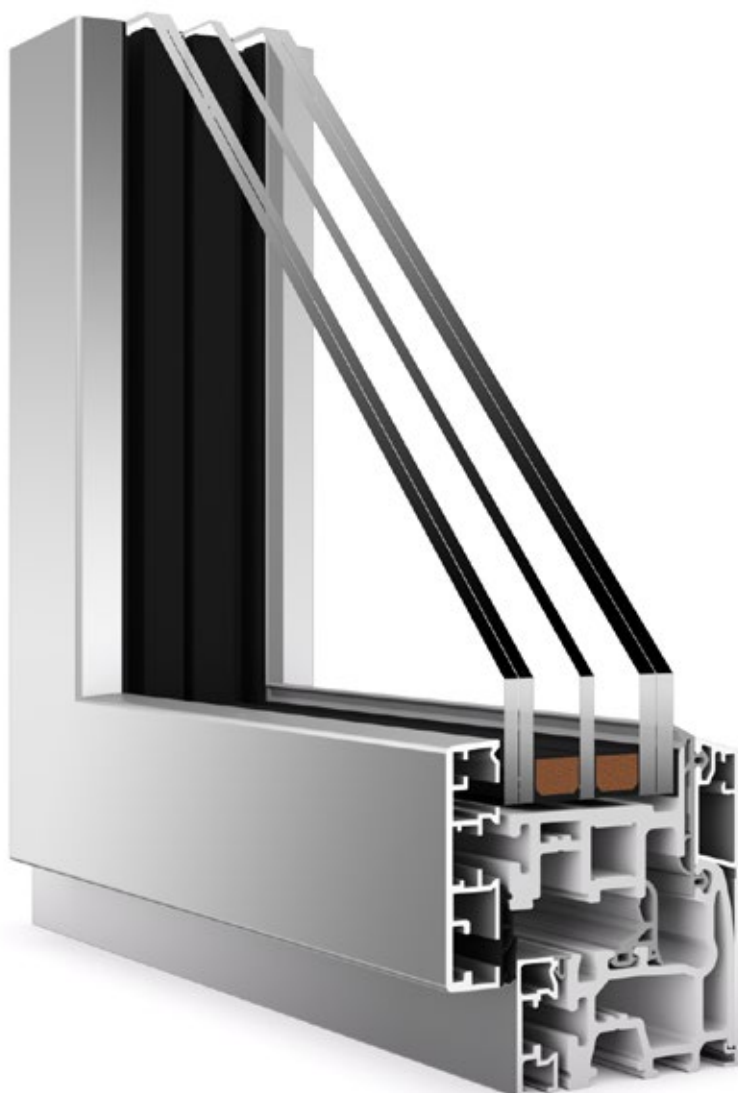
Fibex leaf flush to the frame  
Frame: 68/88 mm x 59 mm



## — FIBEX INSIDE SERIES ALUMINIUM DESIGN

In the **Aluminium** Design range, the Agostini frame appears as a real aluminium frame, but sports Fibex Inside technology. The modernity, elegance and colour flexibility of aluminium come together with the stability and insulation of precisely the Fibex fibreglass composite.

The Fibex thermal break gives this aluminium solution an unparalleled insulation level. The minimal dimensions of the leafs, the absence of glazing beads, and the tilt-and-turn hinges as standard with perimeter anti-burglary device, are brought together to give you high-tech and beautiful aluminium windows and doors.







# Casement windows in aluminium



## Style and innovative design

- Inner leaf lining in modern, squared wood and reduced height (55 mm).
- Internal-side leaf available surmounting the frame (one level) or flush to the frame (zero level).
- External-side leaf slides into frame (H) or is flush with frame (P).
- Optional concealed hinges, mandatory with zero-level configuration.



## Guarantee of living comfort

- The leak-proofing system has 3 seals, with internal soundproofing stop-seal.
- Resistance classes<sup>1</sup>:
  - Air permeability: Class 4
  - Wind load resistance: Class B5
  - Driving-rain tightness: Class E 750
- Acoustic insulation 35 dB as standard<sup>2</sup>, extendable up to 45 dB with dedicated windows.



## Safe choice

- All locking points with self-adjusting mushroom pawls on burglar-resistant steel hardware, resistance class RC1<sup>3</sup>.



## Intelligent choice for energy savings

- Broad glass-housing space, up to 51 mm.
- Heat transmission: **Uf up to 1.20 W/m²k - Uw up to 0.80 W/m²k.**
- “Casa Clima” certification in A class .



<sup>1</sup> Tests carried out on two-leaf window, one of which can be folded, 1,700 x 1,800 mm.

<sup>2</sup> Tests performed on a two-leaf window, one of which can be folded, 1,294 x 1,494 mm.

<sup>3</sup> TFor RC1- or RC2-Certified windows and doors, additional technical specifications are required.



# Inner Configurations



ONE LEVEL

Frame: 68 mm x 59/82 mm



ZERO LEVEL

Frame: 88 mm x 59/82 mm

# External Configurations



HIDE (H)

Concealed Fibex leaf in frame

Frame: 68/88 mm x 82 mm



PLANE (P)

Fibex leaf flush to the frame

Frame: 68/88 mm x 59 mm

## — FIBEX INSIDE SERIES **TOTAL GLASS** DESIGN

With its new **TOTAL GLASS** finishing, the Agostini Group is revolutionizing the concept of window, which is now a true item of Italian design. With its as-standard concealed hinges, Total Glass does away with all that is superfluous. The glass becomes the window's only visible element, freed from its frame to fill the room with new light and elegance.







# Casement windows

## Total Glass

### **Style and innovative design**

- Inner leaf lining in black, white (or on request other colours) screen-printed glass.
- Internal-side leaf available surmounting the frame (one level) or flush to the frame (zero level).
- External-side leaf slides into frame (H) or is flush with frame (P).
- Concealed hinges as standard.

### **Guarantee of living comfort**

- The leak-proofing system has 3 seals, with internal soundproofing stop-seal.
- Resistance classes<sup>1</sup>:
  - Air permeability: Class 4
  - Wind load resistance: Class B5
  - Driving-rain tightness: Class E 750
- Acoustic insulation 36 dB as standard<sup>2</sup>, extendable up to 42 dB with dedicated windows.

### **Safe choice**

- All locking points with self-adjusting mushroom pawls on burglar-resistant steel hardware, resistance class RC1<sup>3</sup>.

### **Intelligent choice for energy savings**

- Glass with double insulation chamber as standard.
- Heat transmission: **Uf up to 1.00 W/m<sup>2</sup>k - Uw up to 0.71 W/m<sup>2</sup>k.**

<sup>1</sup> Tests carried out on two-leaf window, one of which can be folded, 1,700 x 1,800 mm.

<sup>2</sup> Tests performed on a two-leaf window, one of which can be folded, 1,294 x 1,494 mm.

<sup>3</sup> TFor RC1- or RC2-Certified windows and doors, additional technical specifications are required.

# Inner Configurations



ONE LEVEL

Frame: mm 68 x 59/82



ZERO LEVEL<sup>1</sup>

Frame: mm 88 x 59/82

# External Configurations



HIDE (H)

Concealed Fibex leaf in frame

Frame: 68 mm x 82 mm



PLANE (P)

Fibex leaf flush to the frame

Frame: 68 mm x 59 mm

<sup>1</sup> The glass leaf is approximately 8 mm inset from the frame.

# Agostini Venice Collection

Agostini's desire to create original forms breaking away from traditional designs to embrace the classic Venetian style which juxtaposes artistic values and design with best practical performance. Agostini and Venice: two strong characters combined in an innovative, alluring concept for windows and doors, as an unmistakable interpretation of the history and artistic values of Venice.

The windows in the Agostini Venice Collection Series are interpreted according to the customers' design, and fully custom-made with an infinite range of details in Venetian style: from mosaics, to murrhine glass, fabric inlays and glass decorations.





The Agostini Venice Collection Series is a custom-made window range that adds to home decor through an exclusive Venetian style to strikingly enhance the elegance of rooms by adding to your interior's refinement. In perfect harmony with all architectural and contemporary furnishing contexts, this range also suits the more traditional settings.

Discover the Venice Collection Series new custom-made windows. With their unique style and quality, this collection can be transformed to your liking through a series of frames in many different finishes in pure Venetian style and tradition. This new solution adds to the quality of interiors, turning your windows into an aesthetic feature to complement to your interior décor.





## — VENICE **WOOD** DESIGN

With these windows, Agostini lightens its look and elegantly interprets contemporary furnishing trends in terms of design.

The aluminium window-leaf shell in these models is combined with five different types of wood.

Another combination available is aluminium inserts on an aluminium body shell, providing a whole range of colour combination options.



## — VENICE **STONE** DESIGN

The Agostini Stone Design window line conveys a surprising harmony, in which sturdiness, light weight and elegance all go hand-in-hand. The finishings in marble or porcelain tile provide for unique and unrepeatable solutions every time.



## — VENICE **BRONZE** DESIGN

Agostini interprets architectural bronze not only for the prestigious interior finish that it gives to an aluminium window leaf, but also as an external feature that replaces the aluminium itself.





## — VENICE **FABRIC** DESIGN

These precious - and increasingly rare - skills, in an alluring, magical setting where the hum of the looms and the expert hands of the Venetian weavers keep alive an art of the past which has a clear place in the world of today.

Beautiful windows: both inside and out. superlative performance and the art and elegance of Venetian silks.



## — VENICE **MOSAIC** DESIGN

These Agostini windows take on the value of artistic works - unique and exclusive, as the highest expression of Venice's maestri of glass and gold.



## — VENICE **CARVING WOOD** DESIGN




In this line, Agostini's window leafs and engravings become decorative features in their own right, as these design products, with their uniqueness and originality, today represent that world-famed all-Venetian talent and craftsmanship.







# FIBEX INSIDE SERIES CONFIGURATIONS

## External Configurations Fibex Inside **500.55**

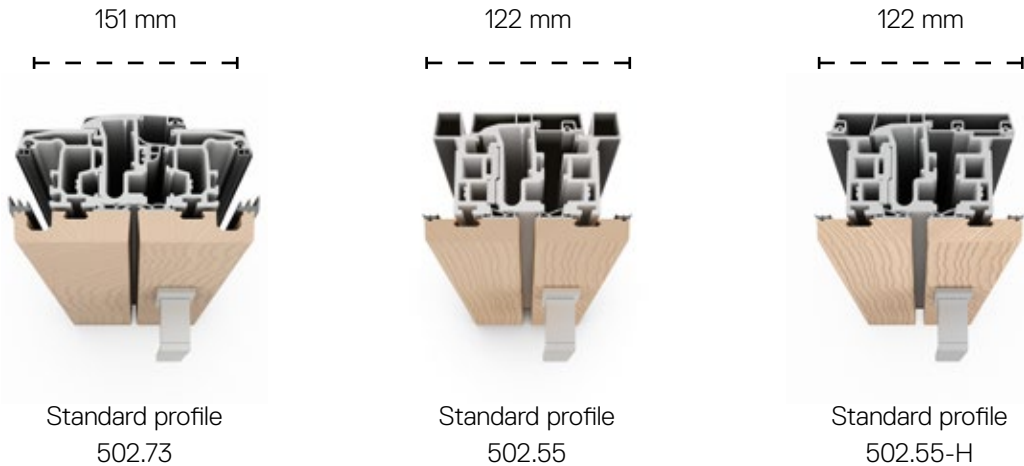
Descriptions	H (Hide)	P (Plane)	B (Bronze)
<ul style="list-style-type: none"><li>• Internal height of the leaf: 55 mm</li><li>• Central casement profile: 122 mm</li><li>• Frame section: variable</li><li>• Glazing space: 30-50 mm</li><li>• Perimeter anti-burglary device</li></ul>			

## External Configurations Fibex Inside **500.73**

Descriptions	S (Step)	T (Trend)
<ul style="list-style-type: none"><li>• Internal height of the leaf: 73 mm</li><li>• Central casement profile: 150 mm</li><li>• Frame section: variable</li><li>• Glazing space: 30-47 mm</li><li>• Perimeter anti-burglary device</li></ul>		

### Section if window central core with two doors:

The mechanical properties of the Fibex profiles allows us to obtain reduced sections, thereby creating 10% more glass surface area.



## Inner Configurations Fibex Inside **500.55**

Legno One Level	Legno Zero Level	Alu One Level	Alu Zero Level	Total Glass One Level*	Venice Collection*
					

\*available in One Level,  
and Zero Level configurations

## Inner Configurations Fibex Inside **500.73**

Wood Modern	Wood Elite	Alu Modern	Alu Elite
			

Uf1 / Uf2 / Uw / Wm²K				
Inner Configurations	55H	55P	55B	73
Wood Zero Level	1.00 / 0.92 / <b>0.70</b>	1.10 / 1.00 / <b>0.72</b>	1.10 / 1.00 / <b>0.72</b>	not available
Wood One Level	1.10 / 0.98 / <b>0.72</b>	1.10 / 1.00 / <b>0.72</b>	1.10 / 1.00 / <b>0.72</b>	1.10 / <b>0.83</b>
Alu - Venice Collection	1.20 / 1.20 / <b>0.74</b>	1.30 / 1.20 / <b>0.76</b>	1.30 / 1.20 / <b>0.76</b>	1.40 / <b>0.92</b>
Total Glass	1.00 / <b>0.74</b>	1.10 / <b>0.76</b>	1.20 / <b>0.76</b>	not available

Legend: Uf1 single glazing  
Uf2 double glazing  
Uw for F1k 1230x1480 with double glazing window Ug 0.50 Wm²K

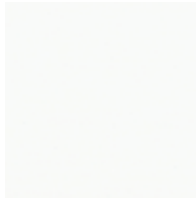
# Aluminium colour range.

The range of colours for Aluminium proposed by Agostini alu-wood, varies from powder varnishes to electrolytic colouring obtained through anodic oxidation of the surface.

The powder varnishes offer RAL colours in glossy or matt, gothic, metal and sublimed wood effect. The colours in this range are the ones that are used the most, but windows

and doors can be made using all the RAL and special colour varieties.

## RAL



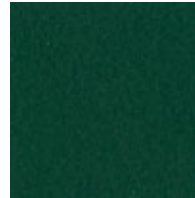
Code: RAL 9010-OP  
Colour: Matt White



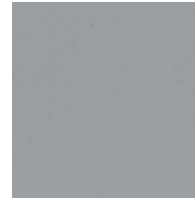
Code: RAL 1013-OP  
Colour: Matt Ivory



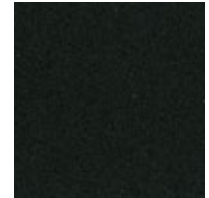
Code: RAL 8017-OP  
Colour: Matt Brown



Code: RAL 6005-OP  
Colour: Matt Green



Code: RAL 7001-OP  
Colour: Matt Grey

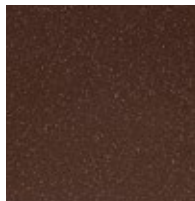


Code: RAL 9005-OP  
Colour: Matt Black

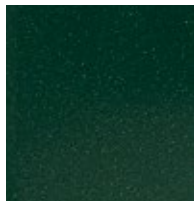
## Gothic colours



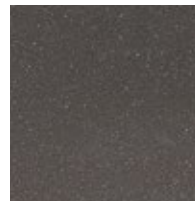
Code: GOT-B  
Colour: Gothic White



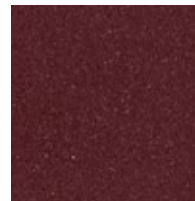
Code: GOT-M  
Colour: Gothic Brown



Code: GOT-V  
Colour: Gothic Green



Code: GOT-G  
Colour: Gothic Grey

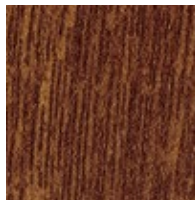


Code: GOT-R  
Colour: Gothic Red

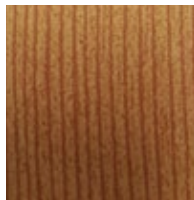
## Sublimed colours



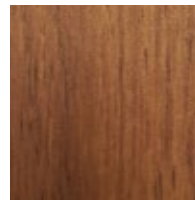
Code: SUB-CI  
Colour: Cherry



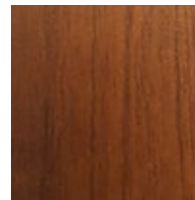
Code: SUB-CA  
Colour: Chestnut



Cod.: PK-A10  
Colour: Douglas

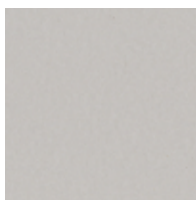


Cod.: PK-A70  
Colour: Natural Oak

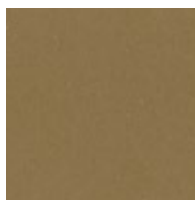


Cod.: PK-A7  
Colour: American  
Cherrywood

## Special colours



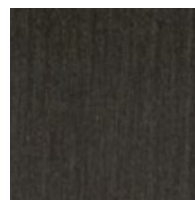
Code: OX-A  
Colour: Oxidized  
Silver



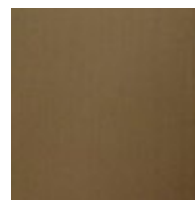
Code: OX-B  
Colour: Oxidized  
Bronze



Code: EL-AC  
Colour: Brushed  
Steel 206



Code: EL-NET  
Colour: Black  
Elegance



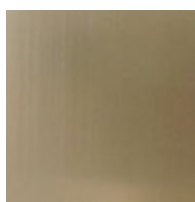
Code: EL-BRT  
Colour: Tinex Bronze



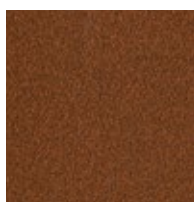
Code: EL-CH  
Colour: Champagne



Code: EL-ORT  
Colour: Tinex Gold



Code: EL-IN  
Colour: Polished  
Stainless Steel



Code: CRT  
Colour: Cor-Ten



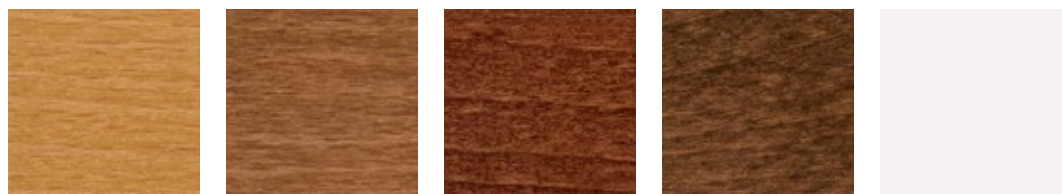
# Wood colour range.

The range of colours for Aluminium proposed by Agostini alu-wood, varies from powder varnishes to electrolytic colouring obtained through anodic oxidation of the surface.

The powder varnishes offer RAL colours in glossy or matt, gothic, metal and sublimed wood effect. The colours in this range are the ones that are used the most, but windows

and doors can be made using all the RAL and special colour varieties.

## Beech



Code: FA-RO  
Essence: Beechwood  
Colour: Tinted Oak

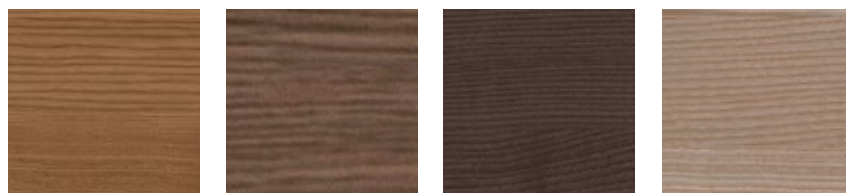
Code: FA-CI  
Essence:  
Beechwood  
Colour: Tinted  
Cherrywood

Code: FA-MO  
Essence:  
Beechwood  
Colour: Tinted  
Mahogany

Code: FA-NO  
Essence: Beechwood  
Colour: Tinted Walnut

Code: FA-LB  
Essence: Beechwood  
Colour: Lacquered White

## Ash



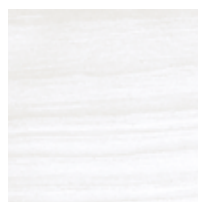
Code: FR-M  
Essence: Ash  
Colour: Honey

Code: FR-C  
Essence: Ash  
Colour: Leather

Code: FR-CA  
Essence: Ash  
Colour: Coffee

Code: FR-S  
Essence: Ash  
Colour: Sand

## Brushed ash



Code: FR-SB  
Essence: Ash  
Colour: Brushed  
White

### Notes:

- Complementary products like boxes, sills, panels are not produced in solid wood and undergo a different varnishing cycle; it is possible that there can be colour differences with respect to the windows and doors.
- Note: The colours in this catalogue are not to be considered as the reference "master" but only approximate, as, for technical reasons, the final appearance may differ slightly due to the nature of the wood piece's shade and grain.
- Availability and delivery times may vary depending on colour.







